

Passap Pencil Flower

Adapted by Pat Holbrook

Yarn

2/24 or fine 3-ply acrylic

Centre Bell

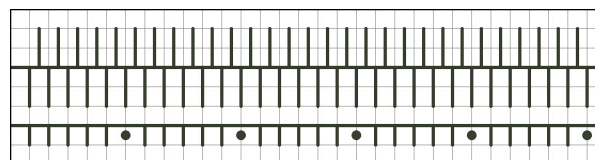
1. Racking handle down, 10 needles on each bed in work.
2. Start with lock on the left. Lock N/N SS 1/1 knit 1 row. Hang small cast-on comb and one weight.
3. Thread the yarn end into a double-eye needle. Bring it up between the beds, over the cast-on stitches and back down between the beds.
4. RC000 Lock CX/CX SS 5/5 knit to RC014.
5. Lock CX/CX SS 6/6 knit to RC034.
6. Starting on BB at left, transfer the 1st stitch to the adjacent needle. Repeat across knitting – 1st to 2nd, 3rd to 4th, etc. Starting on FB at right, transfer the 1st stitch to adjacent needle, repeat across – 1st to 2nd, 3rd to 4th, etc. Keep empty needles in work.
7. SS 7/7 knit 2 rows. RC036
8. Lock CX/CX SS 6/6 knit to RC056.
9. Lock CX/CX SS 5/5 knit to RC070. Remove weight and comb.
10. Leaving a 12" tail break yarn. Thread the yarn tail onto a double-eye needle and gather off the stitches on the FB right to left and then the BB left to right. Pull up tight. Can use a yarn clip to help hold the stitches on the needles.
11. Pass the double-eye needle through the centre of the pulled tight stitches, down and out of the middle of the cast-on row. Pull the yarn ends tight and fasten off. This forms the centre of the flower.



Outside Petals

Use same yarn as the centre bell.

Needle Set-Up



1. Racking handle down. Lock N/N SS 4/4, 30 needles on both beds. RC000 Knit 1 row. Hang comb and weights.
2. Lock N/AX SS 4/4 Knit 6 rows. RC007
3. Lock N/N SS 4/4 knit 17 rows. RC024
4. Transfer stitches from BB to FB. SS 6 knit 1 row. Remove weights and comb.
5. Leaving a 12" yarn tail, thread the double-eye needle and gather off the stitches.
6. Sew up the seam. Pull the bottom of the petals up tight.
7. Centre the bell in the middle of the petal section and stitch in place.

Stem (Pencil Tube)

Fine green yarn – 2/24 or 3-ply acrylic.

1. RC000. Racking handle down, 5 stitches on each bed. Lock N/N SS 1/1 knit 1 row. Hang small comb and weight.
2. Lock CX/CX SS 5/5 knit 4 - 6 rows then insert black strippers.
3. Continue to RC150 or length required for your pencil.
4. Open up the beds and insert the pencil into the tube (blunt end first).
5. Remove weight. Leave the comb in to keep the stitches on the needles. Break off yarn and using the double-eye needle gather off the stitches starting on the FB right to left and then the BB left to right. Remove comb.
6. Pull up tight around the end of the pencil and secure.
7. Sew flower to the top of the tube.